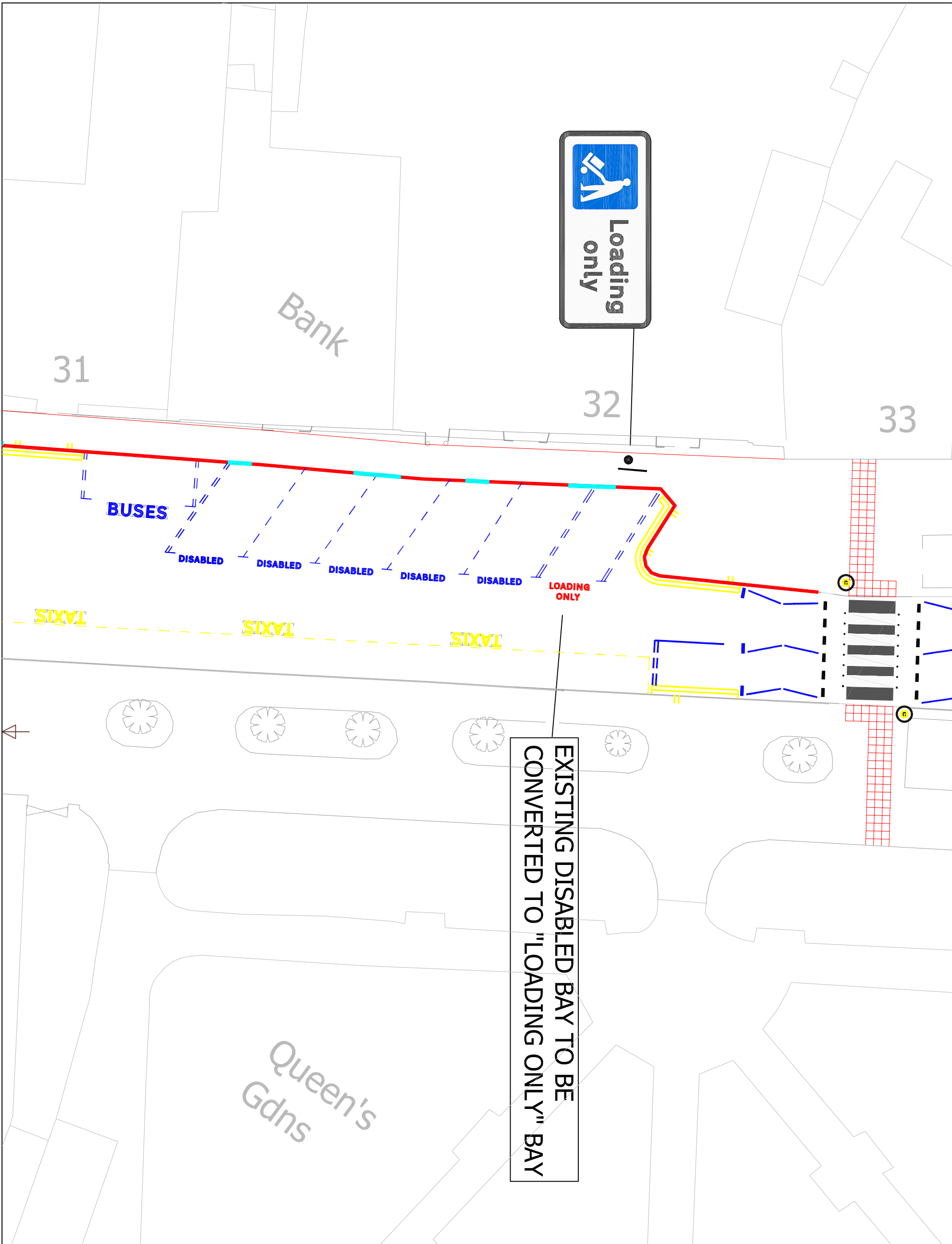


© Crown copyright and database rights 2011 Ordnance Survey 100019422  
 You are not permitted to copy, sub-license, distribute or sell any of this data to third parties in any form.  
 Produced by Staffordshire County Council, 2011.



EXISTING DISABLED BAY TO BE  
 CONVERTED TO "LOADING ONLY" BAY

| Rev       | Date | Detail | By |
|-----------|------|--------|----|
| Revisions |      |        |    |



The Built County - Highways  
 1, Staffordshire Place  
 C/O Wedgwood Building, Tipping Street  
 Stafford  
 ST16 2DH

Ironmarket  
 Newcastle-under-Lyme

Loading Bay

| Prepared | Produced | Checked | Scale |
|----------|----------|---------|-------|
| CL       | CL       | MSS     | NTS   |

Grid Reference

Date  
 October 2012  
 Drawing No.  
 CDT6487-IM-02

Size  
 A3  
 Revision

Status